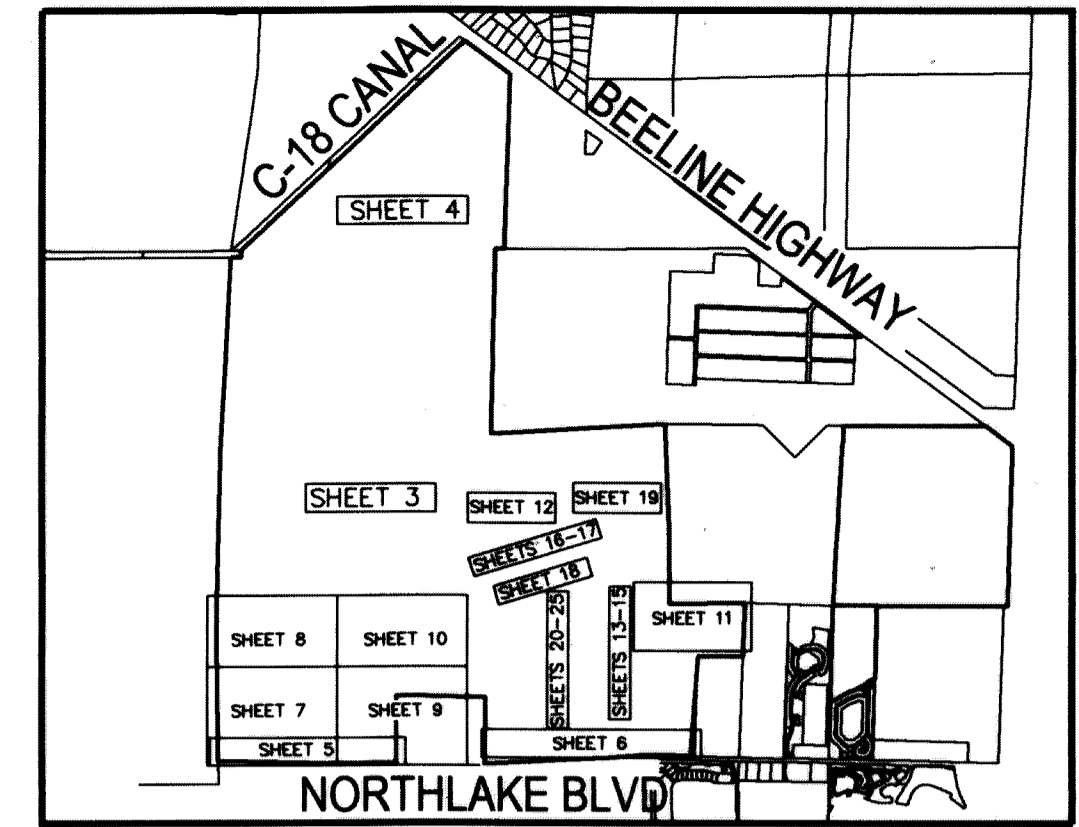


107



NORTH
KEY MAP
NOT TO SCALE

LEGEND/ABBREVIATIONS

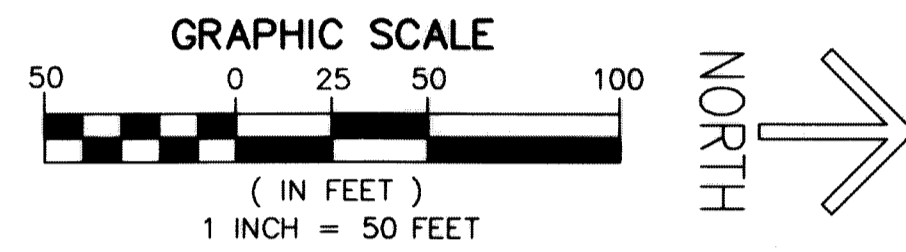
- CL - CENTERLINE
- Δ - DELTA (CENTRAL ANGLE)
- AC - ACRES
- AE - ACCESS EASEMENT
- CB - CHORD BEARING
- CD - CHORD DISTANCE
- CDD - COMMUNITY DEVELOPMENT DISTRICT
- DE - DRAINAGE EASEMENT
- DB - DEED BOOK
- ESMT - EASEMENT
- L - ARC LENGTH
- RBE - ROADWAY BUFFER EASEMENTS
- LB - LICENSED BUSINESS
- MON - MONUMENT
- PB - PLAT BOOK
- PG - PAGE
- O.R.B. - OFFICIAL RECORD BOOK
- FND PBC - FOUND PALM BEACH COUNTY SURVEY MONUMENT
- PBG - PALM BEACH GARDENS
- R - RADIUS
- RB - RADIAL BEARING
- RW - RIGHT-OF-WAY
- SF - SQUARE FEET
- S.F.W.M.D. - SOUTH FLORIDA WATER MANAGEMENT DISTRICT
- SR - STATE ROAD
- SLAE - SEACOAST UTILITY AUTHORITY EASEMENT
- UE - UTILITY EASEMENT
- PRM - DENOTES PERMANENT REFERENCE MONUMENT
- 5/8" IRON ROD WITH CAP STAMPED "C&W PRM LB3591"
- - DENOTES PERMANENT CONTROL POINT

AVENIR
 BEING A PORTION OF SECTIONS 28, 32, 33,
 TOWNSHIP 41 SOUTH, RANGE 41 EAST,
 TOGETHER WITH ALL OF SECTIONS 4, 9 AND 10,
 AND A PORTION OF SECTIONS 5, 8, 14, 15, 16 AND 17,
 TOWNSHIP 42 SOUTH, RANGE 41 EAST,
 CITY OF PALM BEACH GARDENS, PALM BEACH COUNTY, FLORIDA

THIS INSTRUMENT PREPARED BY
 RONNIE L. FURNISS
 OF
CAULFIELD and WHEELER, INC.
 SURVEYORS - ENGINEERS - PLANNERS
 7900 GLADES ROAD, SUITE 100
 BOCA RATON, FLORIDA 33434 - (561)392-1991
 CERTIFICATE OF AUTHORIZATION NO. LB3591
 NOVEMBER 2018

- SHEETS 1-2 COVER
- SHEETS 3-4 OVERALL SITE
- SHEETS 5-6 DETAIL SOUTH BOUNDARY
- SHEETS 7-10 DETAIL CONSERVATION AREAS
- SHEET 11 DETAIL PARCEL E/G
- PARK/GVIC/RECREATION
- SHEET 12 DETAIL CITY ANNEX TRACT & PARCEL A-4
- SHEETS 13-18 DETAIL TRACT R1
- SHEET 19 DETAIL PARCEL C
- SHEETS 20-25 DETAIL TRACTS R2 & R3

SHEET 23 OF 25



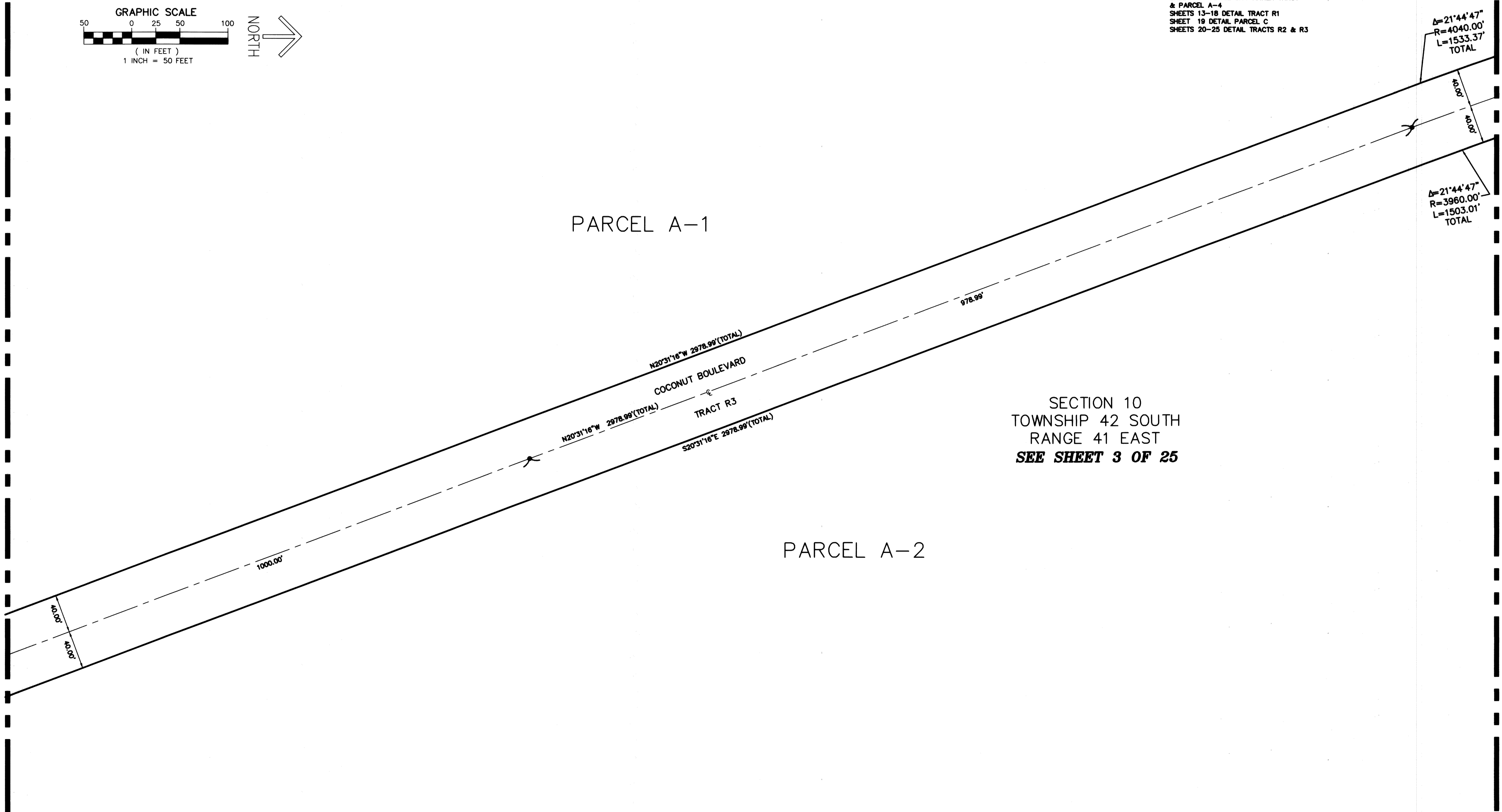
PARCEL A-1

PARCEL A-2

SECTION 10
 TOWNSHIP 42 SOUTH
 RANGE 41 EAST
SEE SHEET 3 OF 25

MATCH LINE SHEET 22 OF 25

MATCH LINE SHEET 24 OF 25



Δ=21°44'47"
 R=4040.00'
 L=1533.37'
 TOTAL

Δ=21°44'47"
 R=3960.00'
 L=1503.01'
 TOTAL